



BRISTOL ROVERS FOOTBALL CLUB

CONFERENCE AND EVENTS BROCHURE



THE MEMORIAL STADIUM

The Memorial Stadium is a multi-purpose venue, with individually designed rooms created to provide excellent facilities combining comfort with style and quality and is an ideal venue for every occasion.

Whatever your needs, our dedicated conferencing and events team provide a tailored service, experience and catering in a unique venue within Bristol.

We host a wide range of events including:



Conferences and Meetings



Private Parties



Awards Dinners



Celebration of Life Events



Christmas Parties



Weddings

Please find on the following pages, the breakdown of our events and rooms and note that we can make any package bespoke to your needs.



REGISTER YOUR INTEREST BY EMAILING AMELIAGRIFFITHS@BRISTOLROVERS.CO.UK

A blue and white flag with the number 1883 on a blue background with a building silhouette.

1883

CONFERENCE AND EVENTS PACKAGES

CELEBRATION OF LIFE

Package 1

- Venue hire
- Freshly brewed tea and coffee on arrival
- Private cashless bar
- Wall Mounted TVs for photo slide (optional)
- PA system for background music (optional)
- Sandwich buffet menu

Package 2

- Venue hire
- Freshly brewed tea and coffee on arrival
- Private cashless bar
- Wall Mounted TVs for photo slide (optional)
- PA system for background music (optional)
- Cold buffet menu

Package 3

- Venue hire
- Freshly brewed tea and coffee on arrival
- Private cashless bar
- Wall Mounted TVs for photo slide (optional)
- PA system for background music (optional)
- Hot fork buffet menu
- Desert included

Additional Upgrades:

- Sparkling Wine
- Bucks Fizz
- Champagne
- Cheese Board

Minimum numbers:

- CJ Hole: 0-25
- Butcombe : 25 min
- Thatchers: 50 min
- Seat Unique Suite: 110 min

Please request menus

DAY DELEGATES

Day Delegate Package:

Hire of meeting room

Morning tea, coffee, Danish pastry on arrival

Mid-morning Tea, coffee & biscuits

Finger Buffet Lunch

Afternoon tea, coffee & biscuits

LCD projector and screen,

Flipchart easel with pad and pens

Complimentary note paper and pens

Car parking is complimentary at the stadium





BIRTHDAY AND PRIVATE PARTIES

Package:

- Private function room set up to your specification (7pm-1am)
- Drink on arrival
- Private cashless bar facility (closes at 12am)
- Finger buffet menu

Additional Upgrades:

DJ
Sparkling Wine
Bucks Fizz
Champagne
Cheese Board

Minimum Numbers:

70



FORMAL DINNER

What we can host:

- Business and corporate functions
- Christmas parties
- Weddings and civil partnership receptions
- Bespoke events

Package:

- 3 Course meal
- Venue hire
- Private cashless vat
- Free parking
- TV screens

Additional Upgrades:

- Sparkling Wine
- Bucks Fizz
- Champagne
- Cheese Board

CHRISTMAS PARTIES

Package 1 - Party at the Mem

(Informal party)

- Disco/DJ
- Private room hire (SUS/THATCHERS) with Christmas decorations
- Arrival drink included
- 2 course hot fork buffet (mince pies)
- Private cashless bar

Itinerary:

- 7pm - Arrival
- 8pm - 2 course buffet served
- 23.45 - Last orders
- 24.00 - Bar close

Package 2 - VIP Party at the Mem

(formal party)

- Disco/DJ
- Private room hire (SUS/THATCHERS)
- Arrival drink included
- 3 course menu
- Glass of wine OR ½ bottle of wine (?)
- Private cashless bar

Itinerary:

- 7pm - Arrival
- 8pm - 23 course dinner served
- 23.45 - Last orders

Package 3 - Christmas Dinner/Lunch

- Private hire from 12 noon – 3pm OR 6-9pm
- Arrival drink included
- Two-course christmas lunch
- Private cashless bar

SUS - minimum numbers 120
Thatchers - minimum numbers 50

Additional upgrades:

- Cheese board
- ½ bottle of wine pp
- Beer bucket per table of 10
- Sparkling Wine
- Bucks Fizz
- Champagne



WEDDING EVENING PACKAGES

Package:

- Reception room hire • all day hire
- Pitch side access for photo opportunities
- Private cashless bar
- Arrival drink - Sparkling wine
- Resident DJ, disco & dancefloor included
- Cake table & knife
- Anniversary tickets for a Bristol Rovers home league game one year on
- Car parking included
- Finger buffet menu included
 - Upgrade to supplement hot fork menu

Minimum of 60 guests

Decoration not included



EVENT SPACES



Our newly refurbished Seat Unique Suite is our largest event space on-site, which can accommodate up to 200 people. A versatile space that is perfect for a wide range of events.



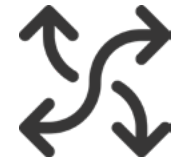
Natural Daylight



Private Bar Facilities



Large Open Space



Versatile



Suitable for Large Events



Great for Networking Events



200 Capacity

THE SEAT UNIQUE SUITE



CJ HOLE LOUNGE

Our newest lounge, located in the West Stand, offers a modern and exclusive feel. An intimate space that can host up to 25 people, ideal for smaller meetings or gatherings.



Intimate



Natural Daylight



Private Bar



Modern and Stylish



20 Capacity

EXECUTIVE BOXES

The best seats in the house, with stunning panoramic views of The Memorial Stadium. A refreshing breakout space from your ordinary office view, that is sure to leave a lasting impression on all guests. Our boxes can host up to 10 guests, with an option to increase this number to 20 via interconnected boxes which create the perfect boardroom experience.



Natural Daylight



Excellent Views



TVs



Located in the West Stand



Mini-fridge



Tea and Coffee





BRISTOL/ THATCHERS BAR

Our Thatchers/Bristol Bar provide a more informal meeting space. Both areas boast views of the pitch and versatility due to the large floor space. The neutral decor, and wall mounted TVs make for an adaptable and personable space which is ideal for networking events, talks and birthday parties.



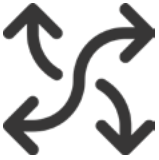
Natural Daylight



Large Private Bar



TVs



Versatile



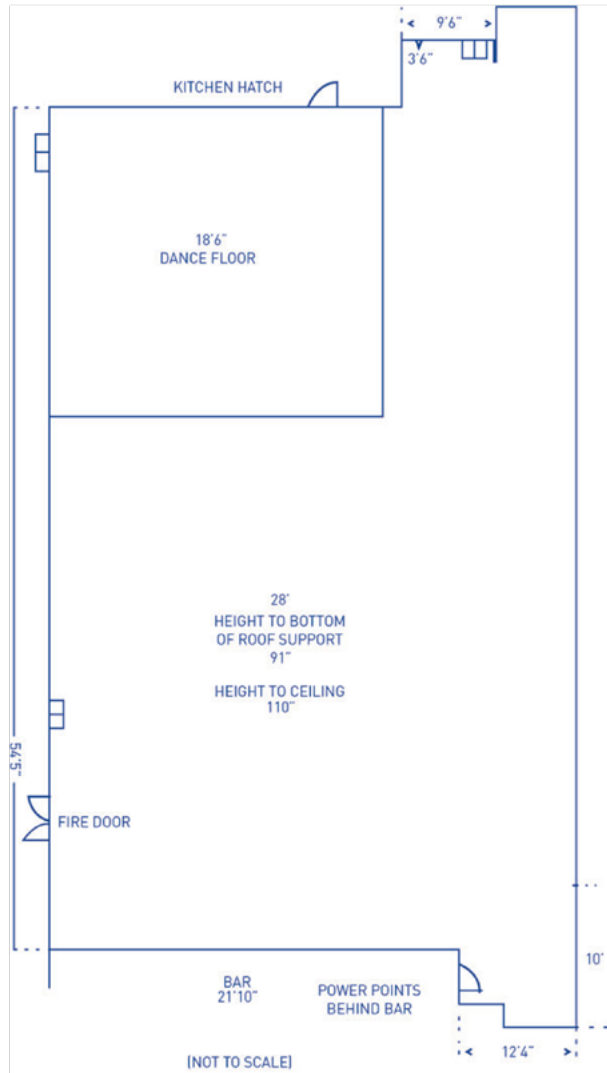
150 Capacity



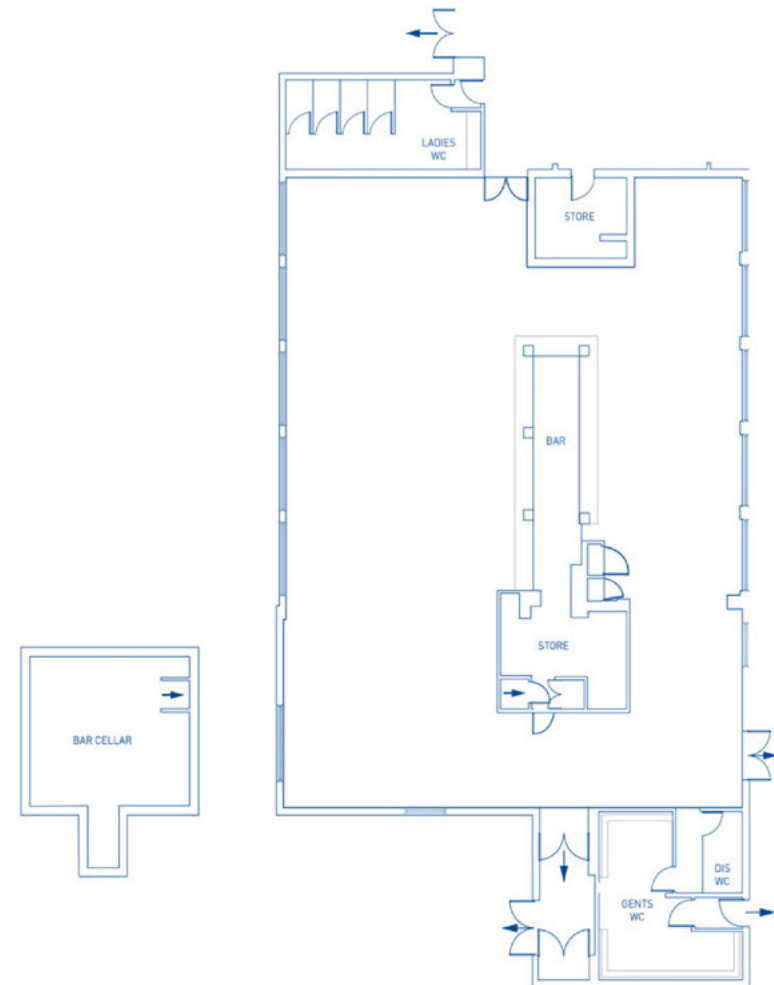
Reception Desk Area

ROOM DIMENSIONS

BRISTOL SUITE

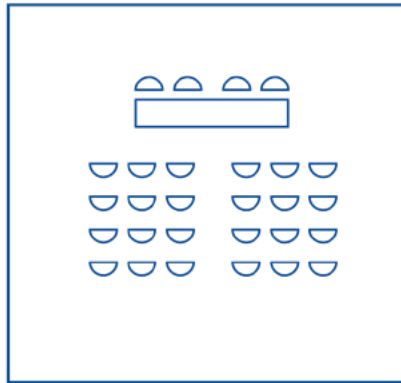


THATCHER'S SUITE

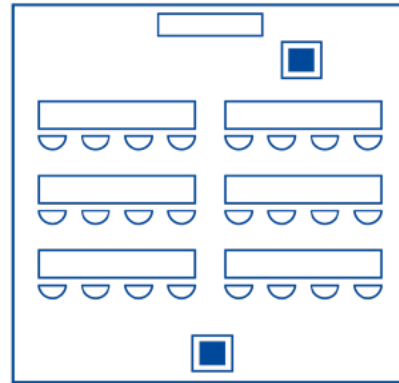


SAMPLE ROOMS

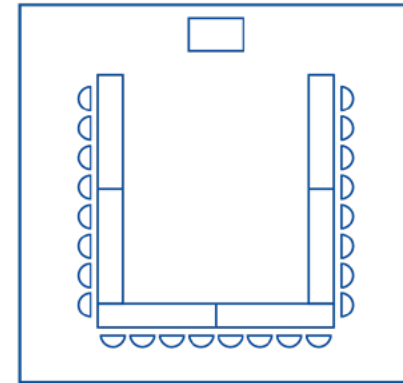
THEATRE



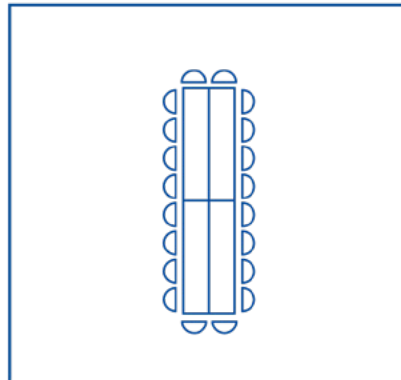
CLASSROOM



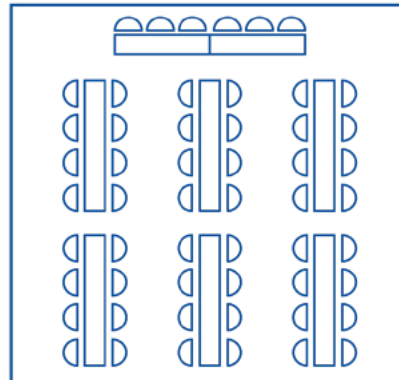
U-SHAPE



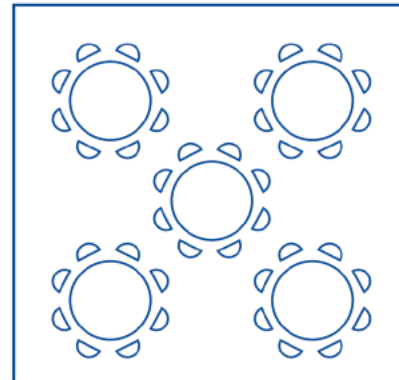
CONFERENCE



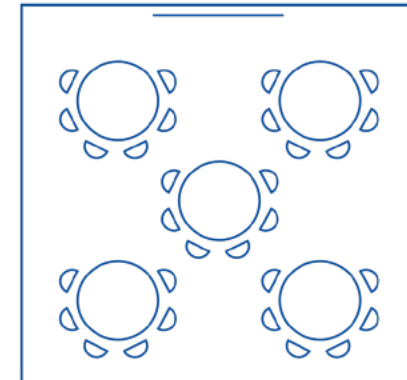
BANQUET



BANQUET ROUNDS



CABARET



GETTING HERE

By Car

From South West/Midlands/north Exit M5 at Junction 18 (sign posted Thornbury, Filton A38). At roundabout take the A38, Gloucester ROAD (Filton) Keep straight on for 4.4 miles passing through Patchway and past Filton Aerodrome. Turn left at traffic lights (opposite The Wellington public house) on to the B4469 (Muller Road). Turn right at the first junction, into Filton Avenue and the stadium is on the left hand side after 0.1 mile.

From East

Exit M4 at Junction 18 (s/p Bristol M32) on to the M32. After 3.1 miles, exit at Junction 2 (s/p B4469 Fishponds, Horfield). At roundabout, turn right (s/p A38, Memorial Stadium) and as the road divides, branch right on to Muller Road. Go straight on, passing through five sets of traffic lights. At the sixth set of lights, turn left into Filton Avenue and the stadium is on the left hand side after 0.1 mile.

By Bus

From the City Centre, bus numbers 73 and 74 run along Filton Avenue directly past the Memorial Stadium. Services 71 and 72 stop in Ashley Road, a short walk from the ground. Services 75, 76 and 77 will stop in Gloucester Road, almost opposite Filton Avenue and will mean a short walk to the ground.

By Train

From Bristol Temple Meads, to Montpelier, which is 1.8 miles walking distance from Filton Avenue. From Abbeywood or Bristol Parkway, bus numbers 73 and 74 run along Filton Avenue directly past the Memorial Stadium.

Alternatively, take bus numbers 8 and 9 from Bristol Temple Meads to either the City Centre or The Horsefair and take any of the buses detailed above.

By Bike

Bristol was chosen as England's first Cycling City and as a result many new dedicated on road cycle lanes and traffic free routes have been created allowing easy access by bike to The Memorial Stadium. There is plenty of cycle spaces available free of charge.

By Air

Bristol International Airport is approximately 12 miles from the Memorial Stadium.



BRISTOL ROVERS FOOTBALL CLUB CONFERENCE AND EVENTS BROCHURE

PLEASE CONTACT AMELIAGRIFFITHS@BRISTOLROVERS.CO.UK
TO REGISTER YOUR INTEREST

